



A Better Way to Build

ExpressLine Structures™



ExpressLine Structures™

Federal Steel Systems' ExpressLine Structures™ are the perfect solution for simple "box" structures. ExpressLine Structures™ significantly reduce the time involved in the design and detail of buildings by utilizing an automated group of core functions. Time consuming tasks, such as detailing trim conditions, and determining which materials to include for a particular roof pitch are all instantly performed by the ExpressLine Structures™ estimating system. Best of all, ExpressLine Structures™ offer an impressive variety of options and accessories when it comes to the design of your metal building.

Simple doesn't have to be plain!

Standard Features

Solid I-Beam Construction, 26 gauge Sheeting and Trims, Sculptured Eave and Rake Trims, Base Angle with Flashing and Closures, Full Cover Trim on all Framed Openings, Long-Life Fasteners, 25 Year Finish Warranty, Engineer Certified Construction Drawings, Delivery as quick as 3 weeks



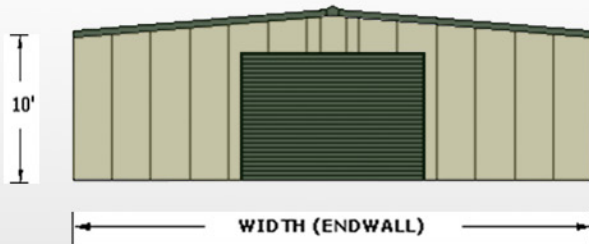
How to design your ExpressLine Structure™

Step 1: Choose your End Wall Profile - Gable or Single Slope

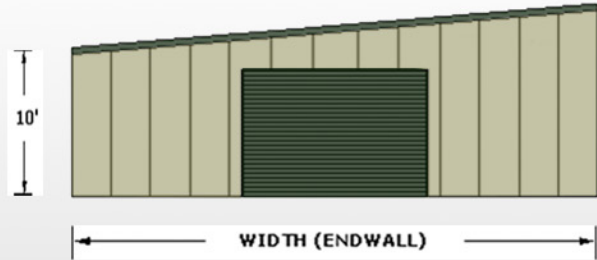
Step 2: Choose your Building Width - Gable: 30' up to 100', Single Slope: 30' up to 60'

Step 3: Choose your Eave Height - Gable: 10' up to 26', Single Slope (low side): 10' up to 18'

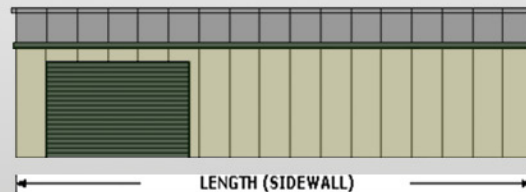
Gable Building



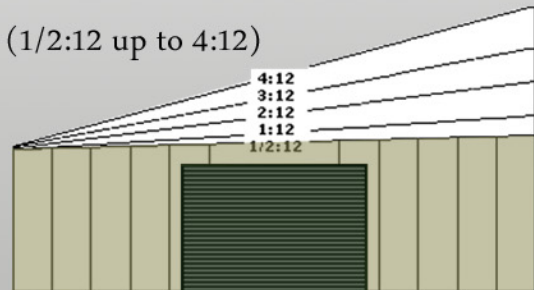
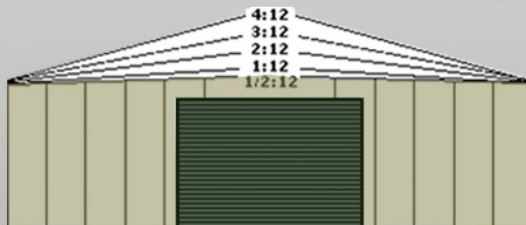
Single Slope Building



Step 4: Choose your Building Length - 30' up to 200'



Step 5: Choose your Roof Pitch (1/2:12 up to 4:12)



Step 6: Choose your Accessories

Framed Openings & Overhead Doors

Walkdoors - 3070, 4070, 6070

Windows - 3030, 4030, 6030, 2070

Gutters & Downspouts

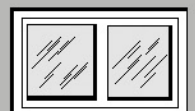
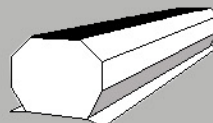
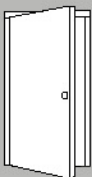
Roof & Wall Insulation - 3" (R10), 3 1/2" (R11), 4" (R13), 6" (R19)

Purlin & Canopy Roof Extensions - 1' up to 5'

Interior Wall Liner Panel - 7'-4" or Full Height

Vents - Wall Louver, Ridge Vent, Circular Vent

Light Transmitting Panels



A Better Way to Build

ExpressLine Structures™



Toll Free: (855) 885-9570

Fax: (720) 475-1626

Email: info@federalsteelsystems.com

Web: www.federalsteelsystems.com

Federal Steel Systems
7505 East Harvard Avenue
Denver, CO 80224

www.federalsteelsystems.com
